



Coping Units

Pisa2® / RomanPisa® / CornerStone®



Colours:



Grey

Desert Buff

Charcoal

Colour availability and colour finish may vary by region. Every attempt has been made to provide accurate data - please note product measurements, weights and coverage are approximate.

Technical Information

COPING UNITS					
PRODUCT	DIMENSIONS	UNITS/PALLET	LF/PALLET	BLOCK COVERAGE	PALLET WEIGHT
Capstone	457 x 305 x 76mm 18 x 12 x 3"	64	98.94	1.5 / LF	3079 lbs 1396 kg
Reverse-A-Cap	200 x 356 x 100mm 8 x 14 x 3" Tapered 7" Back	120	47.4	.625 / LF	2815 lbs 1277 kg
Roman-Reverse-A-Cap	200 x 356 x 100mm 8 x 14 x 3" Tapered 6" Back	72	41.40	.58 / LF	2135 lbs 968 kg

Applicable Walls

Pisa2® / RomanPisa® / CornerStone®

Caps

Applications:



WALL

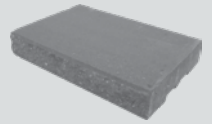
PLANTER

STEPS

Shapes & Sizes:

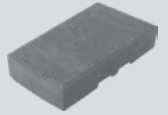
CAPSTONE

457 x 305 x 76mm
18 x 12 x 3"



REVERSE-A-CAP

200 x 356 x 100mm
8 x 14 x 3"
Tapered 7" Back



ROMAN REVERSE-A-CAP

200 x 356 x 100mm
8 x 14 x 3"
Tapered 6" Back



Capstone
Charcoal



Expocrete an Oldcastle® company
British Columbia Alberta Saskatchewan Manitoba
For more info visit: Belgard.com | Expocrete.com

Get Social

