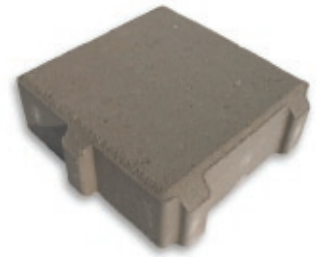




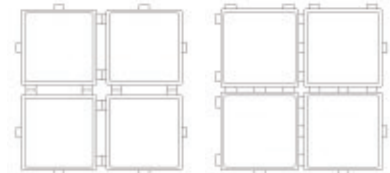
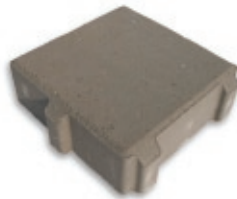
SF-RIMA

SF-Rima pavers are an innovative and environmentally beneficial system designed to reduce or eliminate storm water runoff, decrease flooding, and relieve sewer systems. They are also ideal for turf pavement, which allows for irrigation and cooling of surfaces.



SF-RIMA DIMENSIONS

225 x 225 x 80 mm
9" x 9" x 3.15"



Turf

Drainage



COLOURS

SF-Rima
■ Grey

BUNDLES

Bundle (drainage)	160 Stones	
Area Covered/Bundle	9.2 m ²	99 sq ft
	1518 kg	3360 lbs
# of stones / per sq.	17.36 / m ²	1.62 / sq ft
Bundle (Turf)	160 Stones	
Area Covered/Bundle	10.32 m ²	111 sq ft
	1518 kg	3360 lbs
# of stones / per sq.	15.5 / m ²	1.44 / sq ft