



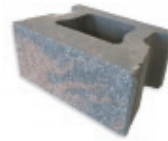
CORNERSTONE

CornerStone is a hollow core unit that has unique interlocking lugs and tapered sides that allow maximum flexibility during construction. When stacked and filled with gravel, CornerStone units interlock, providing high shear resistance and excellent connection strength to geosynthetic reinforcement (where required).

See our web site for more details.



Flat Face:



Bundle 40 Stones
1455 kg / 3200 lbs
of stones per linear 2.18 m / 0.67 ft
Dimensions: Front width: 18"
Depth: 12"
Height: 8"

Radial Face:



Bundle 40 Stones
1455 kg / 3200 lbs
of stones per linear 2.18 m / 0.67 ft
Dimensions: Front width: 18"
Depth: 12"
Height: 8"

Offset Face:



Bundle 40 Stones
1455 kg / 3200 lbs
of stones per linear 2.18 m / 0.67 ft
Dimensions: Front width: 18"
Depth: 12"
Height: 8"

90° Corner Unit:



Bundle 32 Stones
871 kg / 1920 lbs

used to create a 90° corner or stepdown.

All above products available in the following colours:
Charcoal, Desert Buff, Grey & Rustic.